

IMPRESSIONS

TRANSFORM YOUR SPACE



**Color trends &
how to use them**
Page 4

**Design strategies
for transforming
common areas**
Page 6

**DIRECT
SUPPLY**



Pictured on cover: Maxwell-Thomas® Clemscot Chair in Coral winston honey (back) and Architex greenwich sage (seat) with tabac finish. Hooker Studio 7H Cinch Rectangle Dining Table available in finish shown.

Pictured: Kellex Brock Chair #3D3G6 in Fabricut lulu velvet midnight and coco bala isle finish. Cyan Design Savannah Side Table #4DB33 available in finish shown.

Designed by Direct Supply® Aptura®

MAKE AN IMPRESSION

with trending products for room refreshes and larger renovations.



As Senior Living evolves, we understand that your budget, space, and style are changing too. In the coming months, we are expecting to see an influx of refresh and renovation projects to increase marketability and boost census in communities.

Interior design elements such as easily accessible communal spaces, natural lighting and adaptable LED lighting save energy, promote healthy sleep patterns and help reduce anxiety in residents. Integrating technology into design enhances senior safety, supporting wellness, independence and inclusivity among residents.

Implementing these innovative products also boosts staff morale and performance. In the pages ahead, we'll explore trending products that are sure to inspire. Whether you're looking to swap out furniture or embark on a large-scale renovation, we're here to help you make a lasting impression.

4

Color Trends

Create serene, comforting spaces with nature-inspired hues.

10

Good, Better, Best

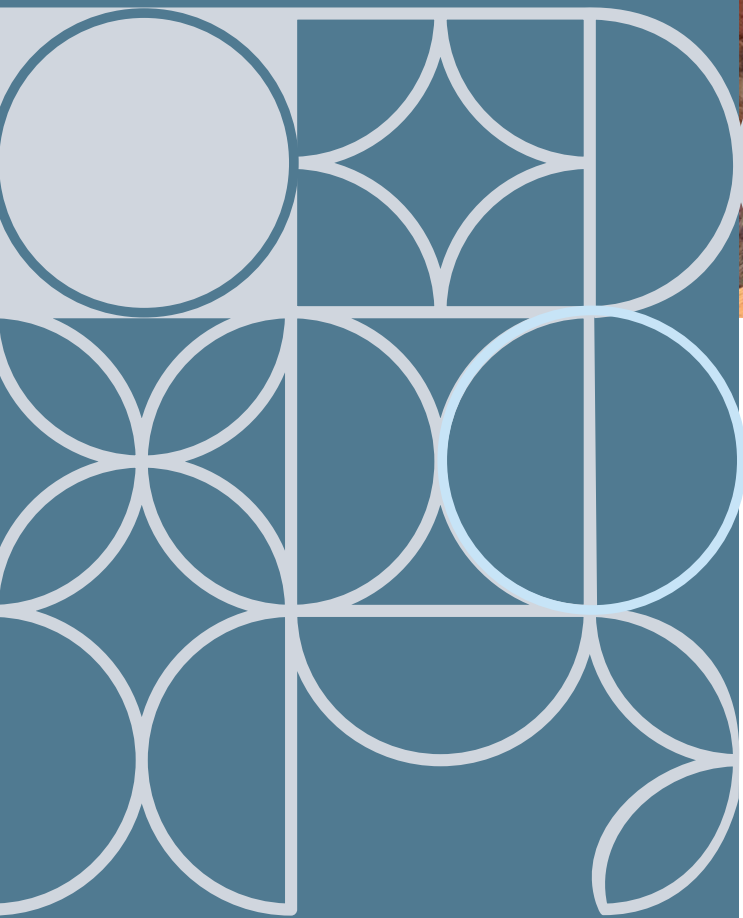
Choose from a curated selection of on-trend furniture for any budget.

26

New & Trending products

Save time and money with new, innovative product solutions.

Color Matters: Color Trends for Senior Living & How to Use Them



How important is color in senior living design? When it comes to designing senior living communities that help seniors feel at home, color matters.

As you flip through this article and envision ways to incorporate new, trending, or innovative products into your senior living design project, keep in mind the impact that color has on a space and the people who inhabit it. Where are your residents from? What are their favorite memories? What is precious to us is worth protecting. When selecting Senior Living color palettes, the hues you choose can create a connection and association to fond memories – reassuring them with the comfort they bring.



Adding a refreshing contrast to the mix are the coastal-inspired blues. From serene, light pastels that mirror the calmness of cascading ocean waves to bold teals that evoke the depths of the sea, these coastal blues infuse a sense of serenity and expansiveness that brings the essence of the coastline inside.

Color of the Year for Senior Living Design

Spring Lake, Direct Supply® Aptura's® 2024 Color of the Year, is a neutral blue-gray hue that brings to life the magic of a rich twilight sky. This soothing, mid-tone blue color gets its inspiration from the mesmerizing colors that grace the horizon as the sun sets and the night sky takes over. It's a timeless yet bold choice, striking a balance between traditional and modern design sensibilities.

What sets Spring Lake apart is its remarkable versatility. It's a color carefully crafted to seamlessly integrate into a wide range of design styles. Whether you choose to employ it as a captivating accent wall or to envelop an entire space in its enchanting embrace, it offers endless possibilities. It particularly finds a natural home in moody, whims goth aesthetics, where it can infuse spaces with an otherworldly allure. Whether you're seeking a touch of sophistication or a daring dash of adventure, Spring Lake effortlessly adapts to your design vision, making it the ideal choice for those looking to transform a space.

Top Color Trends for Senior Living

This year, we find ourselves immersed in an earthy, nature-inspired color palette that's set to redefine the way we perceive and experience healthcare and senior living spaces. This harmonious palette is a celebration of the natural world's beauty, drawing inspiration from the very elements that shape our environment. Earth tones, such as terra-cotta, take center stage, bringing interiors a

warm and grounded feel. The rich, burnt-orange hues evoke the rugged terrain of desert landscapes, creating a sense of connection with Earth itself. As we delve deeper into this palette, we encounter the enchanting world of forestcore-inspired selections. Here, a deep, lush green dominates, offering a glimpse into the heart of lush woodlands. This color exudes tranquility and evokes a sense of renewal, making it a perfect choice for those seeking to create a restful and rejuvenating atmosphere.

For a full list of our 2024 design trends and help incorporating them into your design, visit DirectSupply.com/Impressions to get started with a FREE project consultation.



3

Design Strategies for Common Areas:

Enhance Wellness and Create Connection

Today's seniors are embracing a lifestyle that's not just about comfort but also staying connected, engaged and living well and vibrantly. Stylish furniture solutions with the comfort and safety of seniors in mind can play a key role in creating safe, sustainable, and adaptive environments to residents' evolving needs. That means prioritizing community gathering spaces that inspire social connections, combat social isolation and promote quality of life. Reimagining common areas to not just be "home-like" but actually feel like home is vital to the future of Senior Living communities. Here, we highlight 3 future-focused Senior Living design approaches that put your residents, their families, and your staff first:

A. Maxwell Thomas® Kosoma Collection #GQH10 – Lounge Chair in Burch mohair burnish and brushed antique bronze finish. #GQP34 – Loveseat in linen eggshell and brushed antique bronze finish. | B. Fairfield Paterson UV Sanitizing Chair #24BXG in Burch valet butter pecan. | C. Brant Oval Coffee Table #GT286 available in finish shown. | D. Hooker Furniture Cosmopolitan Chest #HBX28 available in finish shown.



1 Prioritize Health and Wellness with Easy-to-Clean Furniture

Balancing senior lifestyles and safety can start with creating a clean living environment that has a direct impact on the members of your Senior Living community's health. Regular cleaning can reduce the occurrence of allergens and infections that will lead to fewer health complications. Support these safety initiatives throughout your building by including furniture in common spaces that are easy to clean, like faux-wood metal chairs, materials like vinyl, Crypton fabrics and hard surface arms, and moisture-barrier seat decking.



2 Optimize Gathering Spaces with Flexible Furniture

A gathering place for residents that welcomes their families and friends alike is essential to Senior Living design. From multipurpose, welcoming lounges to vibrant bistros and bar areas, creating spaces that are both aesthetically pleasing and functional for versatility throughout the day is crucial in today's care environments. Furniture such as the Fairfield Lounge Chair, the Anthony Chair, and the Anthony Bar Stool are budget-conscious options for creating a warm and inviting senior-focused aesthetic for multiple room use cases.

3 Implement Senior Living Technologies like LED Lighting, UV Disinfecting, and more

While they may not be posting on TikTok, older adults are digitally savvy and embrace technologies, including their smartphones and computers. That means planning for change by creating environments that can adapt quickly to accommodate new technologies beyond Wi-Fi, and it must be integrally part of their daily lives. Furniture with built-in wireless charging, natural and adaptable LED lighting, and state-of-the-art UV disinfecting technology are all becoming more necessary features for optimal health and engagement for residents and staff alike.

Learn more about these best practices and solutions to implement them at DirectSupply.com/Impressions.

All in the Family

Whether in cozy lounges or open atriums, a variety of accent seating helps create inviting spaces for comfort and connections with friends and family.



B



C



D



E

A. Kellex Everhart Chair #BXM29 in Burch labyrinth federal with english chestnut finish. | B. Fairfield Lawson Wing Chair #298TG in Designtex tweed multi tan with light cherry finish. | C. Maxwell Thomas® Paulo Lounge Chair #CC724 in Kravet kasan bracken with walnut finish. | D. Maxwell Thomas® Cedarburg Recliner #GPK81 in milwaukee antique. | E. Maxwell Thomas® Ridgeland Tub Chair with Tablet & Power #G3R80 in Burch valet admiral with mocha finish.



Burch

Refresh Your Community with durable, unique fabrics

Burch provides commercial upholstery tailored to fit Senior Living and Healthcare spaces in a wide array of exceptional styles and durable solutions to fit your community.

Backed by the extensive knowledge and outstanding customer service of Direct Supply, our experts can help you navigate our extensive fabric selection to create a sought-after look.

From top to bottom: Java, Eucalyptus 1012668 Dorset, Cliffside 1012673 Oxford, Clover 1012678 Bali, Tidal 1012648 Dorset, Cotswald 1012676 Oxford, Isle 1012679 Java, Daybreak 1012664 Bali, Pearl 1012651



Designed by Direct Supply® Aptura®



“Blue hues exude a quiet grace reminiscent of calm waters gently lapping against the shore. Its soft, soothing tones evoke a sense of peacefulness and balance, making it a perfect choice for creating harmonious and relaxing senior spaces.

Rebecca Keller, Senior Lead Interior Designer

A. Kellex Ophelia Glider #22Q44 in Burch boucle mist (seat) and CF Stinson drift tidepool (back). | B. Maxwell Thomas® Arlington Heights Lounge Chair #DT209 in Burch mimic pearl with mocha finish. | C. Akin Willow Loveseat #HYB21 in Kravet rohe boucle ivory with warm walnut finish. | D. Maxwell Thomas® Porterville Sofa #HWX91 in milwaukee sepia with mocha finish. | E. Kellex Charmain Chair #3CD6W in Kravet spectrum polar with walnut finish. | F. Kellex Selina Chair #3CCWW in Kravet spectrum polar with walnut finish. | G. Kellex Otis Chair #C6P19 in Burch tagline peacock with english chestnut finish. | H. Bernhardt Hospitality Romney Chair #36BF8 in Coral barista storm with mocha finish. | I. Bernhardt Hospitality Cami Swivel Chair #39YV3 in Burch allante white with portobello finish. | J. Fairfield Downing Wing Chair #3CBXH in Burch allante white with almond buff finish.

Need furniture fast?

Expedite your ordering process when shopping Direct Supply® Quick-Ship. Look for this icon for furniture that ships with faster lead times – get your furniture faster at maxwellthomas.com/quickship.

Style Boost

On-Trend Common Area Furniture for Any Budget.

GOOD



B



C



D

BETTER



E



F



G

BEST



H



I



J

SAVVY SPACES:

Custom, Fast, and Affordable

Transform your community with Savvy Spaces, our new common area program providing customization of your favorite collections with a budget-friendly selection of fabrics and finishes. All Savvy Spaces products include Direct Supply® Quick-Ship lead times of 20 days or less. Follow our simple 3-step process:



“ We understand that budgets are tight. That’s why our team has meticulously curated a collection of our most beloved furniture pieces, now offered at a lower price.

› Ashley K., Senior Product Manager, Direct Supply

A. Maxwell Thomas® Vidalia Collection #3DX3W – A-1 Lounge Chair in Maxwell Thomas® zeta beach. #3DXC7 – A-2 Loveseat. #3DXGH – A-3 Sofa. Both in Maxwell Thomas® maeven foggy with mocha finish. | B. Maxwell Thomas® Arlington Heights Collection #3DWHW – B-1 Lounge Chair in Maxwell Thomas® nettie larkspur with walnut finish. #3DWKY – B-2 Loveseat. #3DWQG – B-3 Sofa. Both in Maxwell Thomas® maeven sanderling with walnut finish. | C. Maxwell Thomas® Mannford Collection #3DXKB – C-1 Lounge Chair in Maxwell Thomas® nash deep teal with walnut finish. #3DXM6 – C-2 Loveseat. #3DXMY – C-3 Sofa. Both in Maxwell Thomas® foster ash with walnut finish. | D. Maxwell Thomas® Steeview Recliner #3DWW8 in Maxwell Thomas® wilder briarwood. | E. Maxwell Thomas® Peoria Bench #3DXPH in Maxwell Thomas® wilder ash with walnut finish. | F. Maxwell Thomas® Cedarburg Recliner #3DWRJ in Maxwell Thomas® nash latte.

Step 1: Select your furniture piece



A-1



A-2



A-3



D



B-1



B-2



B-3



E



C-1



C-2



C-3



F

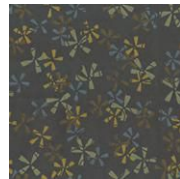
Step 2: Select your Maxwell Thomas® fabric (1 fabric per piece)



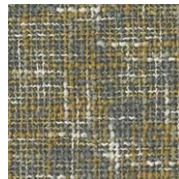
Atara
waterlily



Zeta
beach



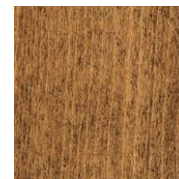
Nettie
larkspur



Maeven
sanderling



Maeven
foggy



walnut



mocha



Foster
ash



Nash
deep teal



Nash
latte



Wilder
briarwood
(vinyl)



Wilder
ash
(vinyl)

Transform your common areas into Savvy Spaces: where style, speed, and savings converge. Call **1-800-889-3957** to spec Savvy Spaces today or visit **maxwellthomas.com/fabrics-finishes/savvy-spaces** to learn more.





Designed by Direct Supply® Aptura®

A Place at the Table

Elevate your community-building culinary experiences with on-trend dining chairs.

A. Maxwell Thomas® Butcherblock Tabletop #3Y689 – Tabletop with Eased Edge in natural maple finish. #C8520 – Siena Disc Table Base.
B. Maxwell Thomas® Vincenza Dining Armchair #G8W33 in carnegie puzzle (outside back), 3816/301 (inside back) and turner wine (seat) with tawnywood finish. | C. Holsag Palmanova Chair #D8W45 in DesignTex cloud velvet fern green with mocha finish.

Sitting Pretty

Outfit your dining spaces with safe and stylish chairs.



D



E



F



G



H



I







J



K



L

D. Maxwell Thomas® Demuzio Dining Armchair  #2T2DM in Burch matrix denim (seat) and kisco fountain (back) with aubergine finish. E. Maxwell Thomas® Frankenmuth Chair #2T4M2 in Burch rebel eggshell with driftwood finish. | F. NEW! Lakecrest Farm Dining Chair #37QGH in Burch allante white with violine finish. | G. NEW! Maxwell Thomas® Hampden Dining Chair #2YVJD in Burch allante white with palazzo finish. H. Maxwell Thomas® Metairie Chair #2T3MH in Burch rebel eggshell with aubergine finish. I. Maxwell Thomas® Macon Dining Armchair  #FFQ54 in FJ gallone woad (back) and JKB aura harbor (seat) with aubergine finish. | J. Maxwell Thomas® Elkhart Dining Armchair #G8T78 in Maxwell Thomas new frontier smoke (back) and Burch footnote tin (seat) with ravenwood finish. | K. Maxwell Thomas® Huntsville Chair  #G8W23 in Momentum parasol spa (back) and Culp cantina putty (seat) with violine finish. | L. Maxwell Thomas® Geneva Activity Chair  #G8X86 in Maxwell Thomas ladysmith steel (back) and Burch bandwidth riviera (seat) with ravenwood finish.

Chair-ishing Choices

Choose from a variety of frames, fabrics, and finishes to meet your dining needs.

GOOD



A



B



C

BETTER



D



E

BEST



F



G



Jadi E.

Senior Product Consultant,
Direct Supply

Wooden chairs enhance the marketability of lower-acuity settings by creating a warm, home-like ambiance. On the other hand, faux-wood metal chairs offer a practical, cost-effective choice for higher-acuity environments such as memory care and Skilled Nursing facilities. Their durable and stackable design ensures ultimate practicality and space-saving efficiency, making faux-wood metal chairs also perfect for activity spaces.

A. Maxwell Thomas® Oak Park II Chair #D2V25 in fleece smoke (back) and ludington walnut (seat) with mocha finish. | B. Akin Flare Stack Dining Armchair #2X69T in Burch rebel eggshell with deep forest finish. | C. Maxwell Thomas® Ridgeland Accent Armchair #24GGJ in Maxwell Thomas® truvvy sapphire (inside back) Archtex boston beacon hill (outside back) and Coral viper canvas (seat) with corduroy finish and beckon outback design. | D. Holsag Sutton Dining Chair #D6M28 in Culp rushmore silt with corduroy finish. E. Maxwell Thomas® Amery Dining Chair #24J6V in Kravet kasan bracken (back) and Maxwell Thomas® milwaukee sepia (seat) with walnut finish. | F. Fairfield Catherine Dining Armchair #37FQK in Architex purebotanica denim (back) and Burch matrix denim (seat) with almond buff finish. | G. Kellex Elizabeth Dining Armchair #BGR18 in Burch mandalay moroccan silver (back) and Architex static aegean (seat) with dark chocolate finish.



Designed by Direct Supply® Aptura®

Sit in Style

Whether you're refreshing a communal dining space or an in-room unit, we've got you covered with comfortable, stylish seating.



Designed by Direct Supply® Aptura®

H. Fairfield Robroy Counter Stool #29FX3 in Fabricut honor espresso (body) and DesignTex cloud velvet dark horseradish (contrast welt) with café mocha finish. | I. Kellex Martin Collection Sofa #BMK67 in Architex wisteria apple with kensington maple finish. Lounge Chair #CMD93 in Architex rugged white cap with walnut finish. | J. Cyan Design Mila Table Lamp #4DF72 in aged brass finish.



Design Tip:

Well-designed, comfortable bedrooms are at the heart of any home-like environment. In Senior Living communities, residents get the added benefit of safety with features like adaptive lighting. Include customizable chairs and case goods for a more person-centered approach.

A. Maxwell Thomas® Scottsdale Collection  #2XJ27 – 3-Drawer Bedside Cabinet. #2Y496 – 4-Drawer Chest. #2VR78 – 2-Door, 2-Drawer Wardrobe. #2X724 – Head/Footboard, Predrilled, Set of 2. Thermolaminate construction in palos mahogany finish and square knob pulls. B. Maxwell Thomas® Saco Ottoman #G4X24 in DesignTex spandau espresso with mocha finish. | C. Uttermost Duara Table Lamp #3HD64 available in finish shown. D. Uttermost Marlo Round Mirror #3HP97 available in finish shown. | E. Maxwell Thomas® Ridgeland Collection #3CM17 – 1-Door, 2-Drawer Wardrobe. #3CP82 – 4-Drawer Chest. #3CF80 – 3-Drawer Bedside Cabinet. Shown in walnut finish with rectangular toe kick and arched satin nickel pull.



E



F



F. Maxwell Thomas® McAlester Collection #2T9W3 – 3-Drawer Bedside Cabinet. #2T9WM – 4-Drawer Chest. #2T9XT – 1-Door, 2-Drawer Wardrobe. All shown in hayward cherry finish with antique black arched bar pull.

G. Maxwell Thomas® Elkhart Collection #2YV09 – 1-Door, 1-Drawer Bedside Cabinet. #2YF99 – 4-Drawer Chest. #2XY97 – 1-Door, 2-Drawer Wardrobe. All shown in shaker cherry with square knob pulls. #2YV35 – Montreal Senior Living Headboard in figured mahogany finish.

H. Direct Supply® Fletcher Non-Quilted Reversible Bedspread #2C783 in moss.






Casegoods that Care

Like any piece of furniture, style is essential. However, functionality is equally vital for Senior Living communities. Explore our range of robust, easy-to-clean casegoods to achieve the perfect balance between the look you desire and the features you require.

A. Hekman Reveal Collection #GCB88 – 3-Drawer Bedside Cabinet with Reveal Top Drawer. #GD889 – 2-Door, 2-Drawer Wardrobe. Both in organic finish.





B. Maxwell Thomas® Williamsburg Collection  #2WD84 – 1-Door, 2-Drawer Wardrobe. #2WC64 – 4-Drawer Chest. #2VW84 – 1-Door, 1-Drawer Bedside Cabinet. All shown in cherry mahogany finish with antique black arched bar pull. | C. HCI Dotted Line Non-Quilted Bedspread #6X325 in clearwater. | D. Maxwell Thomas® Mannford Collection  #JYY35 – Lounge Chair in Burch gamma cashew (body) and Maxwell Thomas® ladysmith steel (seat) with mocha finish. #K2C19 – Loveseat in Kravet cayuga flax with mocha finish. | E. Kellex Brooklyn Ottoman  #CTH31 in Maxwell Thomas® ladysmith steel with mocha finish. | F. Artline East Coast Quick-Ship Artwork #J9F35 – 8 piece collection.



From Bingo to Blockbusters

Transform your activity spaces with fashionable, comfortable furniture for fun and memorable community gatherings.



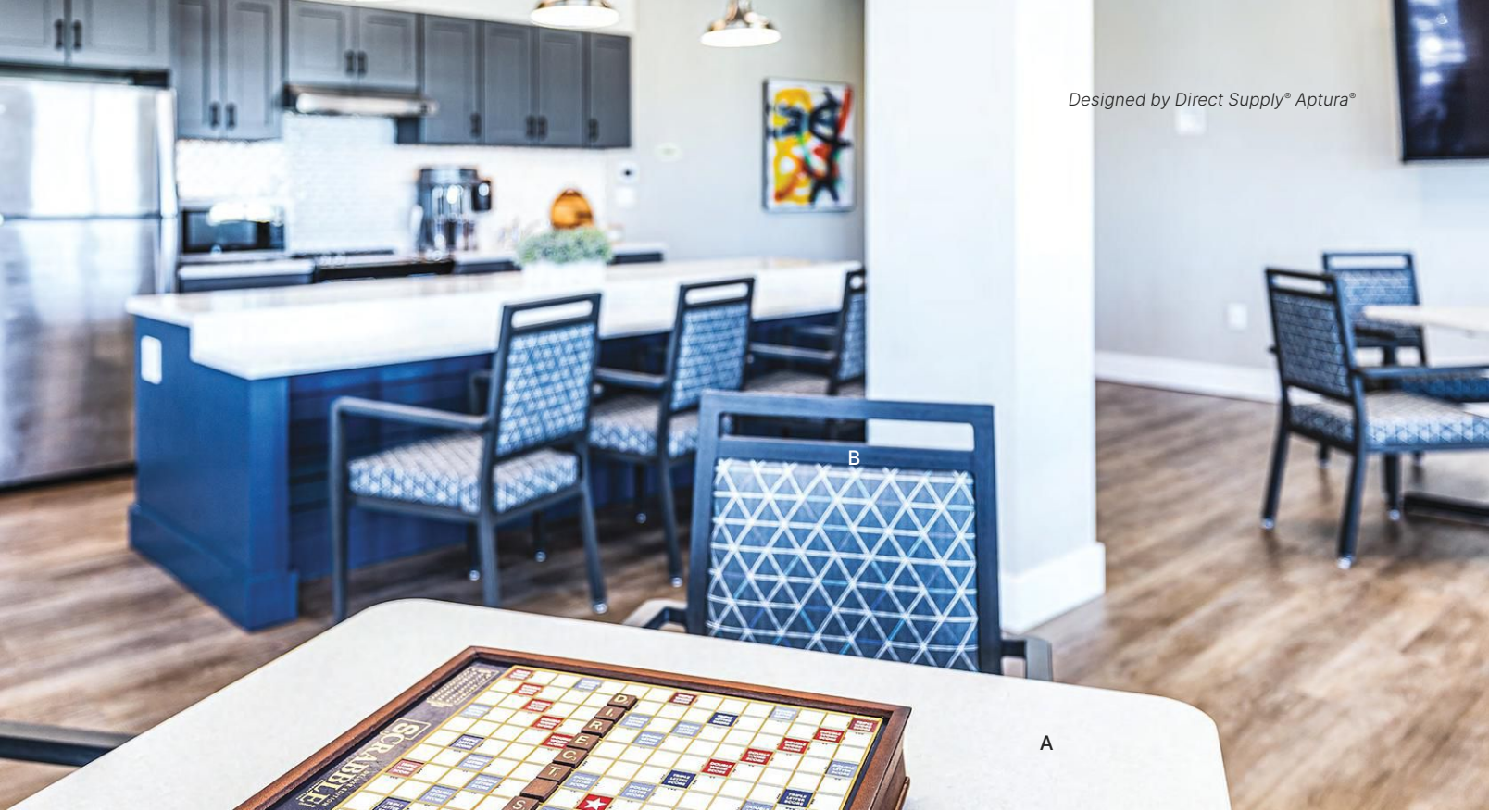
Designed by Direct Supply® Aptura®



“For the aesthetics – I like a ‘moodier’ atmosphere (dim lights and wall sconces) to give the feeling of walking into a movie theater; it enhances the experience.

› **Brigid L.**, Senior Interior Designer

A. Maxwell Thomas® Macon Collection Sofa #DXK46 in Architex paola beige (body) and Carnegie pigment 7 (cushions) with mocha finish. Pillows in Villa Nova kente dew. B. H-Contract Bingham Chair #3DYJD in Fabricut liberose sangria rose (back) and Architex james dean alloy (seat) with farmtable finish. C. Hooker Serenity Skipper End Table #3DYFJ available in finish shown. | D. Hooker Brynlee Tabletop #3DYFG. Base #3DYFH. Both available in finish shown. | E. Maxwell Thomas® Ashville Lounge Chair #G2K97 in Opuzen crossover carnation (outer sides & back) and Architex organza khaki (inner sides and seat) with corduroy finish. | F. Holsag Sierra Dining Armchair #D6359 in Architex organza khaki with ebony finish. Also pictured: *Shelby Williams Pizzazz Armchair in Designtex picnic daisy with weathered grey.*



A. Maxwell Thomas® Essential Series Laminate Tabletop with T-Mold Vinyl Edge #3GQ99 – Square tabletop in white tigris (top) and putty (edge) finish. Akin Table Plus Adjustable Height Table Base #FX625 – Base with 4-caster easy rollers in black finish. | B. Maxwell Thomas® Denio Dining Armchair #FG305 in CF stinson sticks & strings breathing space with tawnywood finish. | C. Maxwell Thomas® Galveston Dining Armchair #FG735 in Carnegie Fabrics maxwell street 6416 13 (back) and Burch alloy shiraz (seat) with tawnywood finish. | D. Maxwell Thomas® Laminate Square Tabletop with Maple Bullnose Edge #8TY02 – in cafelle (top) and jacobean maple (edge). Nexus Table Base #54574 for 42" Square Tops in black finish.



AFTER



BEFORE

Room Revamp Reveal

Seeing is believing: A furnishings refresh makes all the difference. Transform outdated spaces into vibrant, functional environments to boost resident and staff engagement.

Start with a free project consultation at DirectSupply.com/Impressions

Senior-Inspired

Created specifically for senior care, Direct Supply® products are designed with you and your residents in mind.



Panacea® 8000 Bariatric Bed

The bed comes equipped with advanced features, including adjustable height, secure locking wheels, and user-friendly controls to enhance the overall experience for patients and caregivers.



Direct Supply® EZ-Lift™ Wheelchair

The assistance system promotes user independence and reduces strain on caregivers, featuring automatic anti-rollback braking when a user begins to stand. Simply replace the wheelchair seat with the EZ-Lift and a wheelchair cushion on most standard 16", 18", and 20" wide folding wheelchairs.

A. Panacea® 8000 Bariatric Bed with Integrated Scale #36Y7F. | B. Direct Supply® EZ-Lift™ Wheelchair Seat with Anti-Rollback #2TB2Y.

The Future of Functionality

Optimize your staff's time while maximizing resident care outcomes.



C

GE® Profile™ UltraFast Combo Washer and Dryer

Reimagine your laundry space with flexible installation and energy savings with the new 2-in-1 Washer/Dryer. Wash and dry a large load of laundry in about two hours without the hassle of transferring clothes from the washer to the dryer.



D

Brondell Nebia Corre Four-Function Hand Shower

The new Nebia Corre 4-Function Handshower saves up to 50% of water compared to standard showerheads, without sacrificing water pressure or comfort.



E

Aura CF Series Outdoor Heater

Turn summer outdoor spaces, vestibules, and resident patios into all-season spaces with the easily-installed Aura Shadow electric heater. The Aura operates safely with no gas required, no bright light outputs and zero odors/emissions.



F

Brondell Swash 1400 Luxury Bidet Toilet Seat

The Swash 1400 delivers a greater sense of independence and dignity for residents while improving personal hygiene. Innovative LED nightlighting, a carbon deodorizer and calming wash settings make this the best bidet for senior settings.

C. GE® Profile™ UltraFast Combo Washer and Dryer #36FYQ – 4.8 cu. ft. Capacity. Shown in carbon graphite. | D. Brondell Nebia Corre Four-Function Hand Shower #36G9V in matte black. | E. Aura CF Series Outdoor Heater #36HDH – 3000W, 208/240V in stainless steel. | F. Brondell Swash 1400 Luxury Bidet Toilet Seat-Elongated #2RRQX in white.

Welcome to Destination Dining

Your single source
for Senior Living furnishings

- › Match or enhance your aesthetic with an expansive selection of wood and faux-wood metal dining chairs
- › Simplify specification with Maxwell Thomas' new dining table builder on [MaxwellThomas.com](https://www.MaxwellThomas.com)
- › Make your dining spaces senior-savvy with furnishings designed to meet the specific needs of senior care environments
- › Easily and efficiently set up your new furnishings with Direct Supply's delivery and installation services

Pictured: Kellix Brady Dining Armchair #CRG37 in Architex wisteria shoofly (inside back), Richloom néville lemongrass (outside back) and Mayer mode spruce (seat) with cafelle finish. Maxwell Thomas® Essential Series Laminate Tabletop with Maple Bullnose Edge in cafelle (top) and mocha (edge) finish. Maxwell Thomas® Nexus Metal Table Base in black finish.

DISCOVER A WORLD OF DINING OPTIONS TO MEET YOUR
SENIOR CARE NEEDS AT [MAXWELLTHOMAS.COM](https://www.MaxwellThomas.com)