



Fabric & Finish Selection Guide

get inspired with fabrics
for every style

Selecting Fabrics and Finishes Made Easy

Selecting the right fabrics and finishes need to be overwhelming. Our expert interior designers have thoughtfully selected fabrics and finishes that balance the unique demands of Senior Living and Healthcare environments with your style and budget.

Did You Know? Every fabric and finish in this guide is compatible with any upholstered furniture piece on DirectSupply.net. Plus, you can request free samples to ensure you're making the best decision for your space.

Fabric Grading 101: Fabric grading helps classify fabrics based on cost and is influenced by factors like material quality, weaving complexity and design exclusivity.

We've worked closely with our designers and furniture makers to carefully vet each fabric in our program. This ensures you're getting high-quality, stylish fabrics that fit your budget.

With Direct Supply, you have access to the industry's largest selection of furniture frames, paired with fabrics from top suppliers. It's a complete solution to refresh your space.

Questions? Good thing you're working with Senior Living's most knowledgeable sales team. Contact us for help selecting the right fabric for your space.



VISIT TO
LEARN MORE

Fabric patterns are reduced to show the best view of each fabric. We have done our best to represent color accurately, but printing processes and lot selections vary. Please request specific fabric samples for optimum pattern and color matching.



How to Order Furniture with Direct Supply®

1. Select Furniture

Begin by choosing the furniture pieces that best fit your community's unique needs. Your dedicated Direct Supply representative will guide you through our extensive catalog, helping you find the perfect solutions to enhance your space and support comfort.

2. Choose Fabrics & Finishes

Discover a wide range of fabrics, finishes and samples using this guide. Your Direct Supply representative is here to help request samples and through our seamless Samples Program, we'll deliver fabrics, finishes and even select dining chairs for you to review.

3. Finalize Your Selections

After exploring samples with our product and design experts, review your choices with your team to ensure they align with your aesthetic and budget goals. We're here to assist every step of the way, ensuring you find the perfect fit.

4. Get a Quote & Discuss Delivery

Once your selections are confirmed, we'll provide a detailed quote tailored to your project. During this step, we'll also discuss delivery options, including: Direct Supply offers full-service warehousing, professional assembly and installation services. Our experienced team manages every detail for a smooth process, with optional liftgate services for added convenience.

5. Place Your Order

With your quote and delivery preferences set, it's time to place your order. Our logistics experts will manage everything from start to finish, ensuring your furniture is delivered and installed on time, every time.

Navigate the Guide

Inspiring Fabrics 4

Discover fashion-forward fabrics that add a distinctive touch and elevate the ambiance of any space.

Pre-Selected Schemes 10

Explore curated fabric combinations to make your shopping easier.

Woven Performance Fabrics 16

Experience the look and feel of residential fabrics with the added durability of woven designs, ideal for Senior Living and Healthcare environments.

Coated Materials 26

Choose from our selection of vinyl, offering superior cleanability and resilience, perfect for high-activity areas where both style and durability are essential.

Quick Ship Fabrics & Finishes 32

Browse coordinated fabric schemes designed for fast shipping. Paired with Quick-Ship frames, your order will ship in 20 days or less.*

**Lead times subject to change. Contact your Direct Supply seller for more information on specific products.*



Get Inspired

Find fashion-forward fabrics for every style. Our expert interior designers have carefully curated fabric schemes that pair seamlessly with any furnishings procured through Direct Supply®.



“Whether you’re replacing a single piece of furniture or redesigning an entire room, our team is here to

help coordinate your new and existing furnishings. Updating with fresh, on-trend fabrics and furnishings can elevate your space, boosting its appeal. If you’re looking to create memorable, designs, we’re the ideal partner to bring your vision to life.

› Jeanna S., Design Manager

Schedule a **FREE project consultation** or request fabric samples today. Get started at DirectSupply.com/Impressions.



Bohemian Dreaming

- a. Kravet: 35578-50*
- b. Architex: Cane/Basil
- c. Kravet: Tatum/Amazon
- d. Designtex: Hyde/Harvest
- e. Burch: Cinema/Apricot
- f. Architex: Hush/Carbon
- g. Kravet: Jump Stone /Honey
- h. Burch: Gramercy/Brandy
- i. Carnegie: Embellish/1*
- j. Coral: Repetition-c/Imperial Navy

Funky Fit

- k. Momentum: Cutout/Aspen*
- l. Cf Stinson: Staple/Spruce
- m. Designtex: Nagano Crypton/Sienna
- n. Architex: Cane/Ice
- o. Kravet: Pixel/Adriatic
- p. Momentum: Radar/Prism Pixels*
- q. Designtex: Measure/Goldfinch
- r. Burch Syllabus/Salt
- s. Burch: Origin/Tortilla
- t. Burch: Victory/Seascape

Potter's Palette

- u. Richloom: Shorthills ftg/Canyon*
- v. Designtex: Kin/Patina
- w. Burch: Outback/Peach
- x. Romo: Arturo/Copper*
- y. Kravet: Take a Hike/Java*
- z. Burch: Glamour/Blush
- 2a. Coral: Repetition-c /Buckskin
- 2b. Designtex: Mexico City Crypton/Caramel
- 2c. Burch: Latitude/Bistro
- 2d. Architex: New Deal/Hyde Park





Regal Reverie

- a. Romo: Fantasia Velvet/Celestial*
- b. Architex: Greenwich/Mahogany
- c. Kravet: Tatum/Berry
- d. Burch: Pivot/Nautical
- e. Romo: Etitto/Copper*
- f. Burch: Palomino/Midnight
- g. Burch: Wayfarer/Heritage
- h. Designtex: Big Texture/Berry
- i. Coral: Voyage/Rose Gold
- j. Anzea: Bloom/Desert Broom*

Safari Couture

- k. Kravet: 34715-6*
- l. Architex: Big Game/Sila
- m. Kravet: Graham/Onyx
- n. Coral: Precious-c/Cattail
- o. Arc-Com: Wanderer/Ebony*
- p. Burch: Gramercy/Ochre
- q. Kravet: River Run/Kelp
- r. Designtex: Mexico City Crypton/Hemp
- s. Architex: McQueen/Stormy
- t. CF Stinson: Cinema/Patina*

Scholar's Lounge

- u. Architex: Extravaganza/Blush*
- v. Designtex: Corded/Navy
- w. Designtex: Alcazar/Shiraz
- x. Designtex: Spree/Metal
- y. Cf stinson: Archer/Aim
- z. Coral: Peaceful/Tornado
- 2a. Architex: New Deal/Economy
- 2b. Cf stinson: Premier/Nutmeg
- 2c. Kravet: Solace/Latte
- 2d. Burch: Memento/Gingersnap

Ski Ya Later

- 2e. CF Stinson: System/Mercury*
- 2f. Kravet: Graham/Mineral
- 2g. Kravet: 36751-416*
- 2h. Coral: Venom/Flint
- 2i. Burch: Crosshatch/Coconut
- 2j. Designtex: Kth/Patina
- 2k. Burch: Madras/Gypsum
- 2l. Richloom: Sphinx Imo/Marble*
- 2m. Burch: Wayfarer/Alpine
- 2n. Designtex: Mexico City Crypton/Denim





Stargazer

- a. Opuzen: Starship/Navy*
- b. Designtex: Rise/Villa
- c. Burch: Harmony/Mystic*
- d. CF Stinson: Petal Dots/Moonbeam
- e. Designtex: Alcazar/Blackberry
- f. Architex: Edge/Navy
- g. Architex: Glossed /Maritime
- h. Architex: Buccaneer/Reef*
- i. Burch: Haiku/Daydream
- j. Designtex: Stockholm Crypton/Sky

Vintage Floral

- k. Fabricut: Nami Island/Smoke*
- l. Architex: Organza/Haze
- m. Burch: Glamour/Pine
- n. Burch: Mezzanine/Rose
- o. Burch: Jackpot/Forest
- p. Designtex: Layer/Peach
- q. Brentano: Coronation/Whiskey Black*
- r. Designtex: Lake Placid Crypton/Opal
- s. Arc-Com: Tudor Rose/Sangria*
- t. CF Stinson: Lorelai MB/Pirate

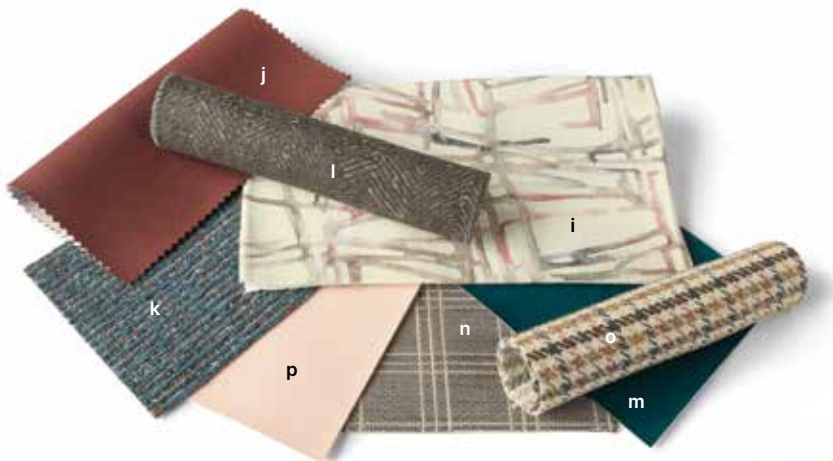
Year of the Serpent

- u. Fabricut: Boa/White*
- v. Architex: Las Palmas/Parsley
- w. CF stinson: Finley/Cottonwood
- x. Burch: Mezzanine/Mesa
- y. Fabricut: Sheeler Modern/Fresh*
- z. Architex: Purevogue/Limestone
- 2a. Burch: Gamma/Palmetto
- 2b. Burch: Whisper/Bone
- 2c. Designtex: Chenille Chevron/Yellow
- 2d. Designtex: Stratum/Lilypad*



Shop Graded-In Fabric Schemes

Start these graded-in fabric schemes, thoughtfully created to balance durability and budget. In the following pages, explore a diverse array of fabric schemes designed to elevate any space.



Black Tie

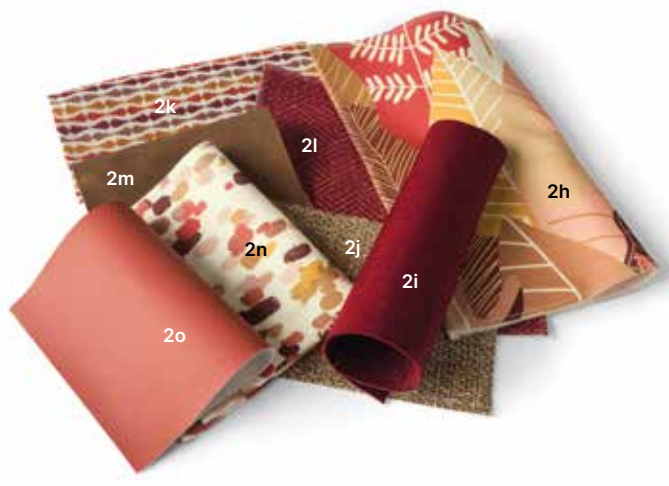
- a. Architex: Indio/Sesame
- b. Architex: New Deal/Museum
- c. Coral: Contessa/Mineral
- d. Coral: Reptile/Blacksmith
- e. Architex: English Leather/Homestead
- f. Kravet: Northport/Driftwood
- g. Coral: Witty/Mica
- h. Designtex: Corded/White

Blind Date

- i. Coral: Czar/Blossom
- j. Coral: Venom/Red Rock
- k. Designtex: Corded/Pool
- l. Coral: Repetition/Koala
- m. Architex: Hush/Nautical
- n. Burch: Parlour/Stratus
- o. Burch: Memento/Heirloom
- p. CF Stinson: Lara/Barre

Blue Bayou

- q. Kravet: Decoy/Seaglass
- r. Designtex: Corded/Light Blue
- s. Kravet: Mossi/Spring
- t. Architex: Edge/Citrine
- u. Architex: Hush/Wolf Grey
- v. Burch: Cinema/Cove
- w. Kravet: Watershed/Seaglass
- x. Architex: New Deal/Education



Chateaux

- z. Coral: Influential/Driftwood
- 2a. Designtex: Chunky Tweed/ Medium Blue
- 2b. Architex: McQueen/Clay
- 2c. Kravet: Decoy/Mineral
- 2d. Kravet: Marnie/Toffee
- 2e. Burch: Victory/Cafe Au Lait
- 2f. Burch: Parlour/Cornflower
- 2g. CF Stinson: Lara/Gate

Cinnabar Sunset

- 2h. Coral: Jubilee/Sunset
- 2i. Coral: Winston/Shiraz
- 2j. Designtex: Lake Placid/Sepia
- 2k. Architex: Indio/Sumac
- 2l. Architex: Purevogue/Porto
- 2m. Architex: English Leather/Aurora
- 2n. Coral: Joy/Sunset
- 2o. Architex: Hush/Terracotta

Down the Cape

- 2p. Kravet: Bayview/Harbor
- 2q. Coral: Winston/Denim
- 2r. Coral: Wiston/Ginger
- 2s. Burch: Mezzanine/Marina
- 2t. Architex: Greenwich/Bronze
- 2u. Kravet: Cato/Moonstone
- 2v. Kravet: Watershed/Driftwood
- 2w. Designtex: Linnen/Parafin

Earthenware

- 2x. Coral: Contessa/Blossom
- 2y. Designtex: Spree/Spring
- 2z. Kravet: Myriad/Desert Bloom
- 3a. Burch: Labyrinth/Frost
- 3b. Architex: McQueen/Silver Dollar
- 3c. Kravet: Decoy/Clay
- 3d. Architex: Worsted/Antler
- 3e. Designtex: Linnen/Plum



Everglades

- a. Kravet: Daybreak/Lagoon
- b. CF Sinson: Lara/Hydro
- c. Kravet: Myriad/Lagoon
- d. Architex: Greenwich/Creme
- e. Coral: Winston/Caspian
- f. Kravet: Watershed/Hillside
- g. Coral: Repetition/Moss
- h. Designtex: Chunky Tweed/Turquoise

Fall Frolic

- i. Coral: Reptile/Moss
- j. Coral: Contessa/Mineral
- k. Coral: Winston/Tuscan Sun
- l. Burch: Parlour/Butterscotch
- m. Kravet: Leaf Dance/Sandstone
- n. Architex: New Deal/Warm Springs
- o. Designtex: Mexico City Crypton/Pebble
- p. Architex: McQueen/Pine

Grapefruit Paloma

- q. Coral: Joy/Santa Fe
- r. Designtex: Chunky Tweed/Orange
- s. Architex: Purevogue/Teal
- t. Architex: Big Game/Mara
- u. Coral: Reptile/Verdigris
- v. Burch: Victory/Cornsilk
- w. Coral: Jukebox/Santa Fe
- x. CF stinson: Lara/Mink

Greenhouse

- y. Coral: Influential/Concord
- z. Burch: Parquet/Aloe
- 2a. CF Stinson: Watercolor Grid/Multi
- 2b. Architex: Hush/Rodeo
- 2c. Architex: Purevogue/Amber
- 2d. Burch: Memento/Stonewashed
- 2e. Designtex: Lake Placid Crypton/Midnight
- 2f. Burch: Parlour/Kiwi



Intuition

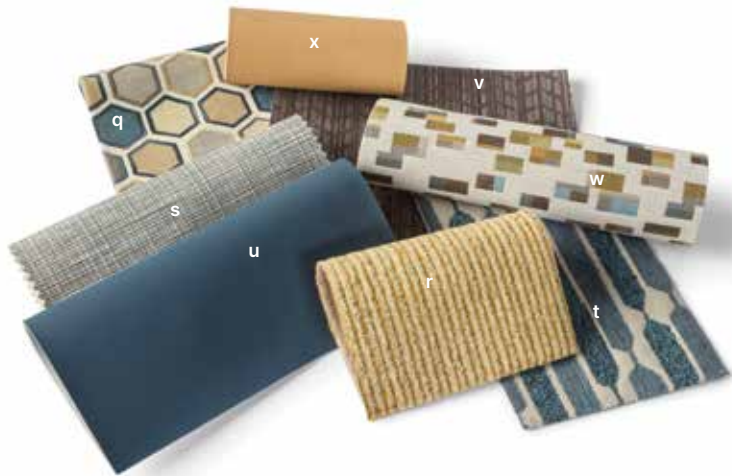
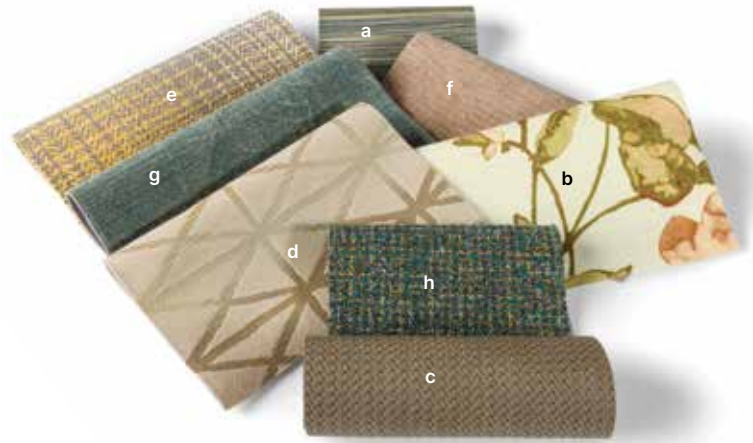
- 2g. Architex: Intersect/Sunflower
- 2h. Designtex: Lake Placid Crypton/Jewel
- 2i. Coral: Winston/Pearl Grey
- 2j. Coral: Voyage/Rose Gold
- 2k. Architex: McQueen/Cloud Cover
- 2l. Designtex: Chunky Tweed/Off-White
- 2m. Kravet: Looking Glass/Sandstone
- 2n. Coral: Winston/Raisin

Mister Rogers

- 2o. CF Stinson: Fenestra Tool/Serrano
- 2p. Coral: Venom/Rapids
- 2q. Architex: Particle/Sand
- 2r. Architex: Greenwich/Mahogany
- 2s. Architex: Intersect/Night
- 2t. Designtex: Chenille Chevron/Grey
- 2u. Designtex: Chunky Tweed/Red
- 2v. CF Stinson: Petal Dots/Sunflower

Proud Mary

- 2w. Kravet: Potomac/Sandstone
- 2x. Architex: Organza/Onyx
- 2y. Designtex: Lake Placid Crypton/Granite
- 2z. Kravet: Myriad/Anchor
- 3a. Architex: Cane/Onyx
- 3b. Coral: Reptile/Fawn
- 3c. Architex: McQueen/Gravel
- 3d. Coral: Venom/Pecan



Quietude

- a. CF Stinson: Ripple 2.0/Silent
- b. Maxwell Thomas: Dahleigh/Sepia
- c. Architex: Greenwich/Fog
- d. Burch: Batik/Driftwood
- e. Coral: Willoughby/Tuscan Sun
- f. Coral: Winston/Stone
- g. Architex: Purebotanica/Thyme
- h. Designtex: Lake Placid Crypton/Teal

Ragstock

- i. CF Stinson: Fenestra Too!/Vindaloo
- j. Architex: Big Game/Savanes
- k. Burch: Momento/Vintage
- l. Designtex: Lake Placid/Brick
- m. Architex: Worsted/Root
- n. Coral: Jukebox/Sunset
- o. Architex: Cane/Canyon
- p. Coral: Winston/Butterscotch

Rain or Shine

- q. Coral: Jukebox/Beach Glass
- r. Designtex: Corded/Yellow
- s. Burch: Guideline/Smoke
- t. Designtex: Chenille Chevron/Canal
- u. Architex: Hush/Nautical
- v. Architex: Intersect/Slate
- w. Architex: Particle/Dew
- x. CF Stinson: Lara/Cashew



For expert assistance in
designing your next space, visit
DirectSupply.com/Impressions.

Redwood Forest

- y. Coral: Jubilee/Santa Fe
- z. Coral: Voyage/Marmalade
- 2a. Burch: Mezzanine/Breeze
- 2b. Coral: Czar/Jewel
- 2c. Burch: Victory/Seascape
- 2d. Architex: Las Palmas/Salt
- 2e. Burch: Equinox/Baja
- 2f. Designtex: Linnen/Fresco

Thrive

- 2g. Coral: Influential/Lively
- 2h. Coral: Voyage/Sunrise
- 2i. Architex: Las Palmas/Fennel
- 2j. CF Stinson: Lara/Marmalade
- 2k. Coral: Winston/Glacier
- 2l. Designtex: Chenille Chevron/Sand
- 2m. Designtex: Chunky Tweed/Multi
- 2n. CF Stinson: Pod/Aria

Volcanic

- 2o. Kravet: Baystreet/Clementine
- 2p. Designtex: Corded/Grey
- 2q. Maxwell Thomas: Boudreaux/Brick
- 2r. Coral: Voyage/White Chocolate
- 2s. Architex: Organza/Stone
- 2t. Kravet: Myriad/Clementine
- 2u. Kravet: Marnie/Goldenrod
- 2v. Designtex: Lake Placid Crypton/Opal

Zipline

- 2w. Architex: Particle/Mist
- 2x. Designtex: Linnen/Charcoal
- 2y. Architex: Intersect/Sprout
- 2z. Kravet: Salvadore/Bluebird
- 3a. Coral: Winston/New Bud
- 3b. Burch: Parquet/Lavender
- 3c. Architex: Edge/Navy
- 3d. CF Stinson: Lara/Plum



Woven Performance Fabrics

The ambiance of residential fabric meets the durability of woven design.

Ideal for high-demand environments, woven performance fabrics provide the perfect balance of style and long-lasting durability. Many fabrics feature moisture barriers, stain resistance and fire-safe features.

Maxwell Thomas®
Pasilla \$\$\$\$\$



crimson celestial

Maxwell Thomas®
Bostwick \$\$\$\$\$



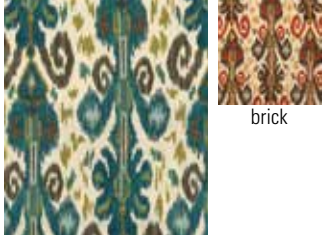
octavia perplex

Maxwell Thomas®
Dahleigh \$\$\$\$\$



perennial sepia

Maxwell Thomas®
Boudreaux \$\$\$\$\$



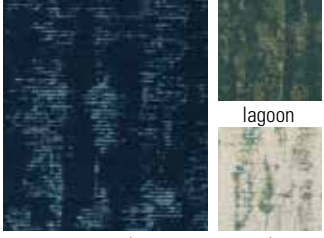
boho brick

Maxwell Thomas®
Lavinia \$\$\$\$\$



cerulean sebastian

Mossi \$\$\$\$\$



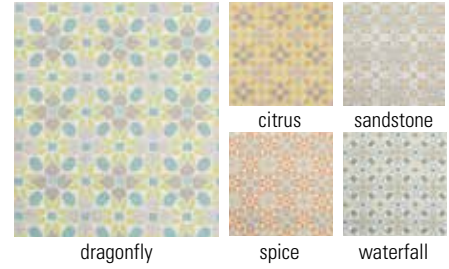
coastal lagoon spring

Zyon



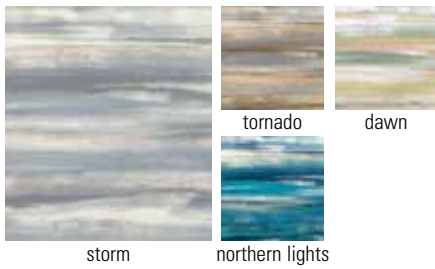
\$\$\$\$\$

Tiepolo



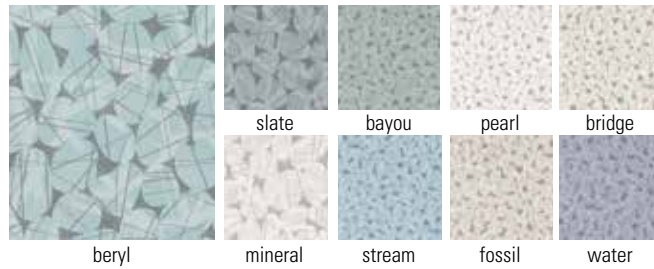
\$\$\$\$\$

Peaceful



\$\$\$\$\$

Riverstone



\$\$\$\$\$

Laila



\$\$\$\$\$

Mandalay



\$\$\$\$\$

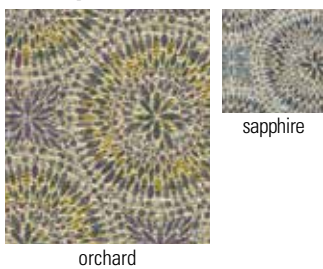
Potomac



\$\$\$\$\$

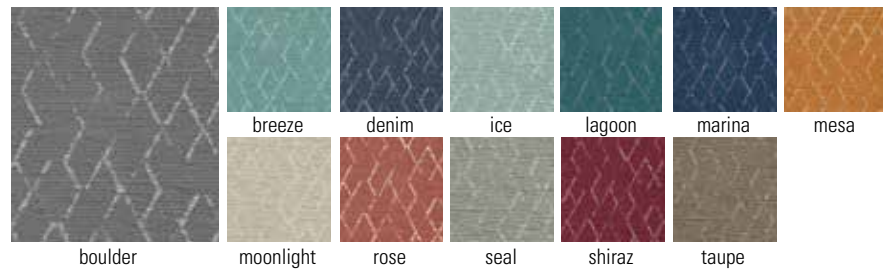
Maxwell Thomas®

Truvvy



\$\$\$\$\$

Mezzanine



\$\$\$\$\$

Maxwell Thomas® Priux



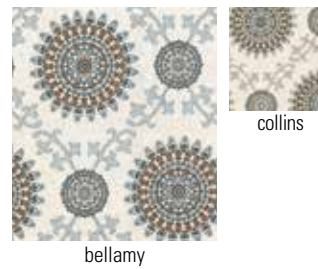
\$\$\$\$\$

Maxwell Thomas® Storybrooke



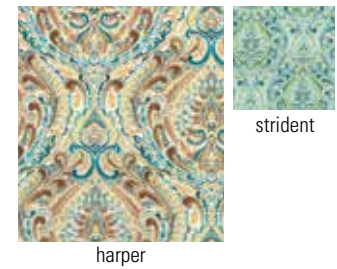
\$\$\$\$\$

Maxwell Thomas® Wandering Grace



\$\$\$\$\$

Maxwell Thomas® Boca



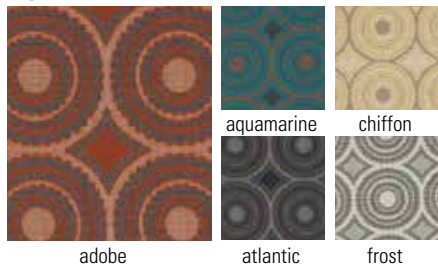
\$\$\$\$\$

Patterns are reduced to show the best view of each fabric. We have done our best to represent color accurately, but printing processes and lot selections vary. Please contact us for specific fabric samples for optimum pattern and color matching.

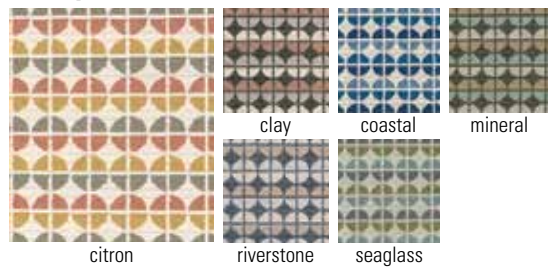
Kapow



Opus



Decoy



Light Point



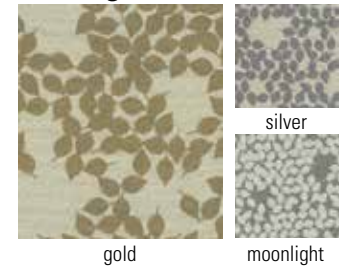
Cayuga



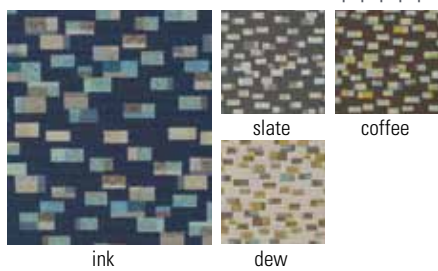
Enroute



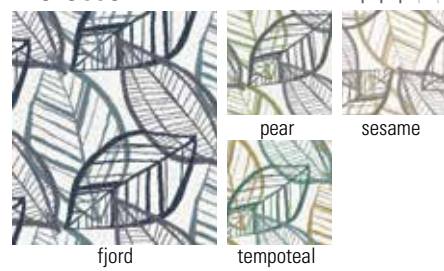
Dancing Leaves



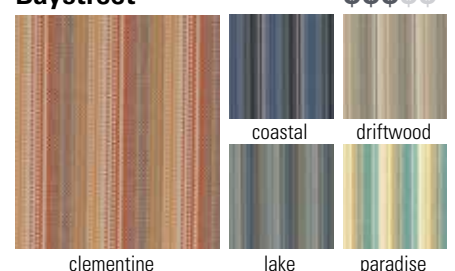
Particle



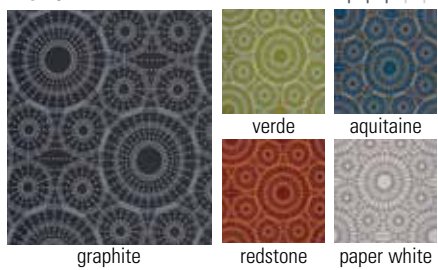
Morocco



Baystreet



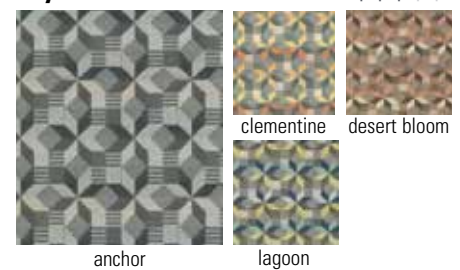
Atria



Kin



Myriad



Window Pane



port



sand



sky



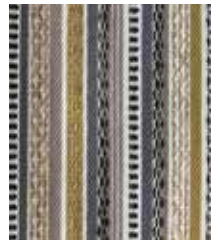
parakeet



ink blue

\$\$\$\$

Kisco



citron



fountain

\$\$\$\$

Influential



lively



concord



driftwood

\$\$\$\$

**Maxwell Thomas®
Gillingham**



antique



beguiled

\$\$\$\$

Madras



alfresco



aura



bespoke



electric



gypsum



moroccan

\$\$\$\$

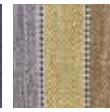
Walkway



Coral



fountain



goldenrod

\$\$\$\$



oasis



waterfall

Intersect



sunflower



sprout



night



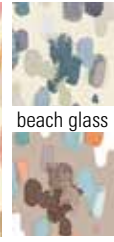
slate

\$\$\$\$

Joy



sunset



beach glass



bedrock



santa fe

\$\$\$\$

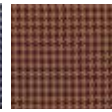
Steamboat



cognac



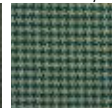
coastal



cranberry



woodland



serenade

\$\$\$\$

Niles



gazpacho



scuba



streetscape



horizon



spruce

\$\$\$\$

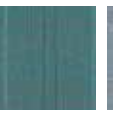
Prep School



clover



azure



aquamarine



chambray



ecru



sculpture

\$\$\$\$

Finley



breeze



sunflower



moss



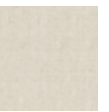
sycamore



sundown



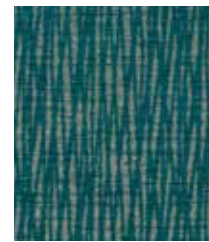
isle



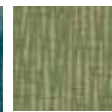
cottonwood

\$\$\$\$

Beeline



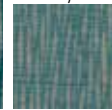
tropic



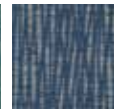
ivy



arctic



crystal



federal

\$\$\$\$

Patterns are reduced to show the best view of each fabric. We have done our best to represent color accurately, but printing processes and lot selections vary. Please contact us for specific fabric samples for optimum pattern and color matching.

› Schedule a **FREE** design consultation or request fabric samples. Get started at DirectSupply.com/Impressions.



“ Our wide array of fabrics open up a world of possibilities for your design. Schedule a free consultation to learn how we can help you find the right pattern and colorway to fit both your budget and aesthetic.

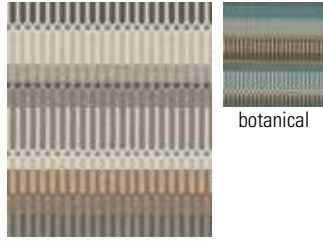
› **Rebecca K.**, Senior Lead Interior Designer

Ardsley \$\$\$\$



boardwalk noble

Morse Code \$\$\$\$



vanilla bean botanical

Memento \$\$\$\$



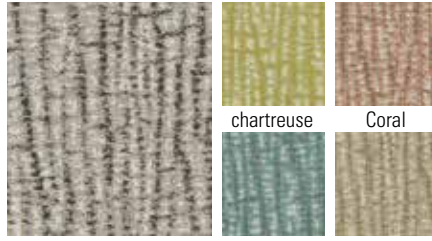
americana stonewashed heirloom vintage earl grey

Tatum \$\$\$\$



amazon berry branch daydream meadow nomad

Ikate \$\$\$\$



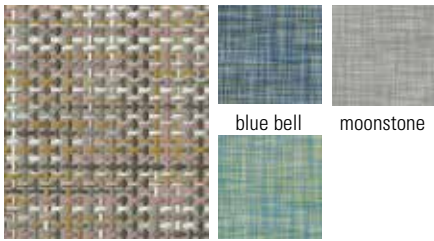
marble chartreuse Coral mirage beach

Measure \$\$\$\$



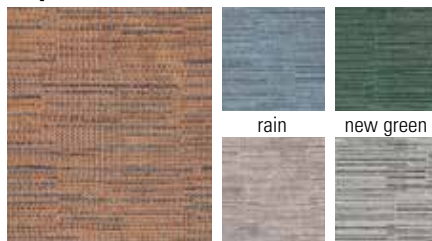
casco bay clover admiral blueberry hill poppy

Pursue \$\$\$\$



storm blue bell moonstone caribbean skies

Layer \$\$\$\$



peach rain new green lilac snowy

Victory \$\$\$\$



marvelous driftwood cafe au lait cornsilk burlap lapis chesapeake

Maxwell Thomas® Keup Trails \$\$\$\$



stormy



SHOWN: Maxwell Thomas® Sedona #FFW73 shown in opus aquamarine (back) and baron ore (seat) with violine finish

Ascot \$\$\$\$\$




silverado cascade natural

Rio \$\$\$\$\$



meadow hudson bedrock carnival

Dejo \$\$\$\$\$




butterscotch limonata

Guru \$\$\$\$\$



skylight vanilla bean lotus tidal mineral

Roadline \$\$\$\$\$



mulberry brown sugar coastal berry

Batik \$\$\$\$\$




grotto greystone sprout seabreeze safari crystal

Valet \$\$\$\$\$



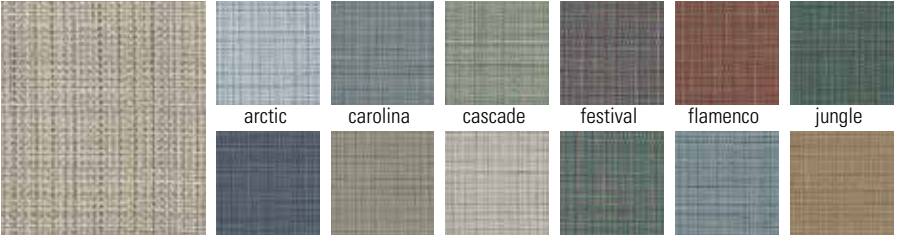
admiral argyle palmetto aqua butter pecan

Labyrinth \$\$\$\$\$



calypso aspen cornflower olive rosewater shearling caviar cerise federal frost sienna stratus

Holmes \$\$\$\$\$



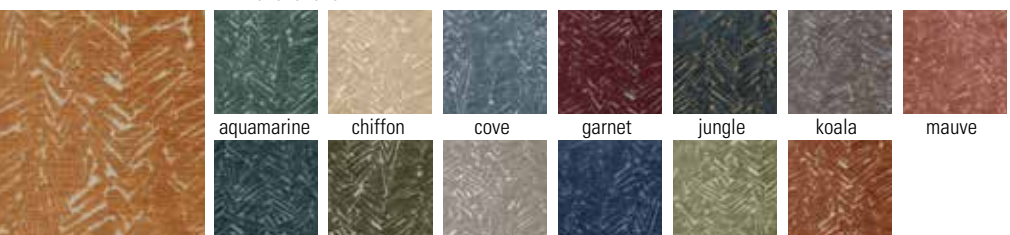
almond lapis london fog marble paradise sky tawny arctic carolina cascade festival flamenco jungle

Marnie \$\$\$\$\$



goldenrod toffee

Cinema \$\$\$\$\$



apricot pacific pine pumice royal sage sienna aquamarine chiffon cove garnet jungle koala mauve

Patterns are reduced to show the best view of each fabric. We have done our best to represent color accurately, but printing processes and lot selections vary. Please contact us for specific fabric samples for optimum pattern and color matching.

Tweed Multi



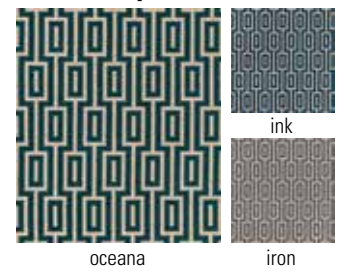
\$\$\$\$

Avenue



\$\$\$\$

Street Key



\$\$\$\$

Solace



\$\$\$\$

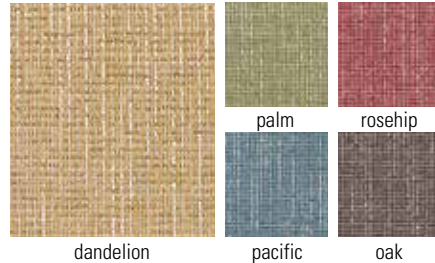
\$\$\$\$

Tagline



\$\$\$\$

Hashtag



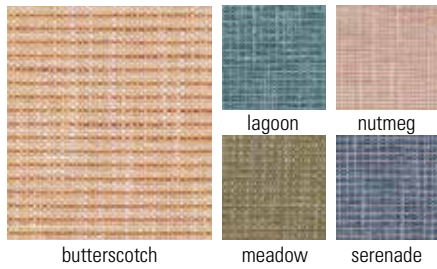
\$\$\$\$

Wayfarer



\$\$\$\$

River Park



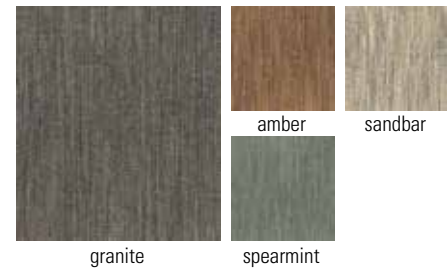
\$\$\$\$

Jumpstone



\$\$\$\$

Delfino



\$\$\$\$

Archer



\$\$\$\$



Pivot

\$\$\$\$\$



Mexico City

\$\$\$\$\$



Staple

\$\$\$\$\$



Syllabus

\$\$\$\$\$



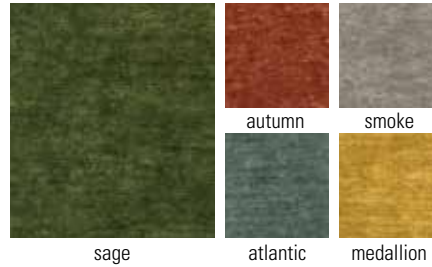
Raffia

\$\$\$\$\$



Glamour

\$\$\$\$\$



Via

\$\$\$\$\$



Witty

\$\$\$\$\$

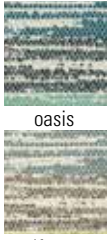


Latitude

\$\$\$\$\$



bistro



alfresco



oasis



sediment

Fenestra Too!

\$\$\$\$\$



cove



mariana



marsh

Barista

\$\$\$\$\$



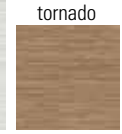
storm



tornado



northern lights



cattail



ocean

Spree

\$\$\$\$\$



cerulean



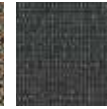
cloudy



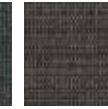
dandelion



garland



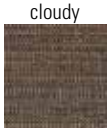
gulf



metal



nightshade



peach



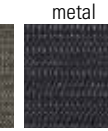
shoreline



spring



sprout



ultramarine

Weaver

\$\$\$\$\$



birch



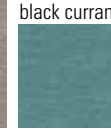
black currant



amethyst



dandelion



juniper



pumice



quartz

Parlour

\$\$\$\$\$



butterscotch



ruby



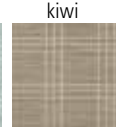
kiwi



cornflower



seabreeze



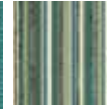
biscotti

Equinox

\$\$\$\$\$



cabana



jungle



sedona



goldenrod



tranquil

Jukebox

\$\$\$\$\$



santa fe



sunset



bedrock



beachglass

Winston

\$\$\$\$\$



aegean



aqua



baltic



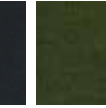
barley



biscuit



black sea



boxwood



brick



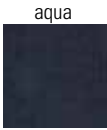
butterscotch



caspian



cypress



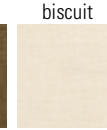
denim



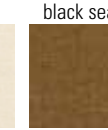
dove



fawn



frost



ginger



glacier



glow



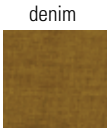
grape



grey



hickory



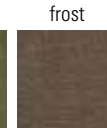
honey



latte



malachite



mineral



new bud



onyx



orchid



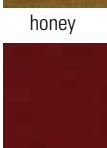
oyster



pearl grey



raisin



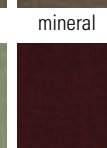
rouge



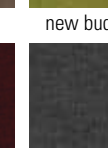
saddle



seaglass



shiraz



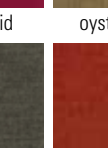
steel



stone



storm



tuscan sun

Patterns are reduced to show the best view of each fabric. We have done our best to represent color accurately, but printing processes and lot selections vary. Please contact us for specific fabric samples for optimum pattern and color matching.

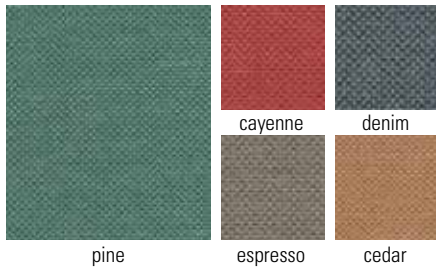
Coated Materials

Easy-to-clean vinyl that stands the test of time.

Vinyl provides exceptional cleanability and durability, making it a top choice for high-traffic areas like dining spaces or any environment where moisture and spills are a concern. For a stylish yet functional design, consider vinyl for chair seats paired with woven performance fabrics for the chair backs.

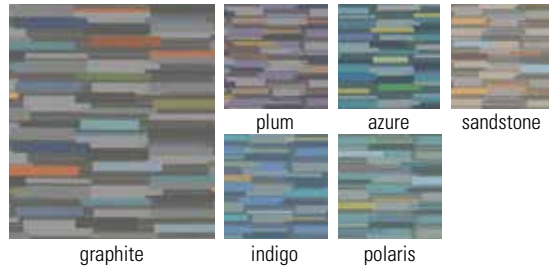
Parquet

\$\$\$\$\$



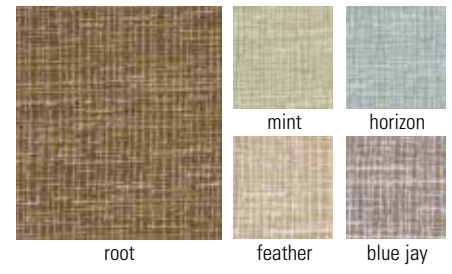
Pave

\$\$\$\$\$



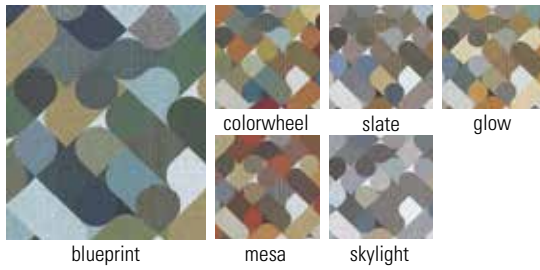
Worsted

\$\$\$\$\$



Swift

\$\$\$\$\$



Bounce

\$\$\$\$\$



Pod

\$\$\$\$\$



Current

\$\$\$\$\$



Mimic

\$\$\$\$\$



Static

\$\$\$\$\$



Palomino



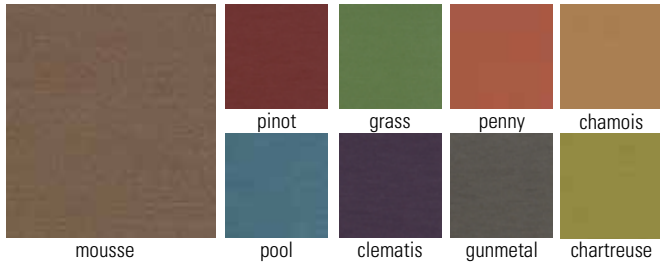
\$\$\$\$\$

Venom



\$\$\$\$\$

Rise



\$\$\$\$\$

Organza



\$\$\$\$\$

Keen



\$\$\$\$\$

Alcazar



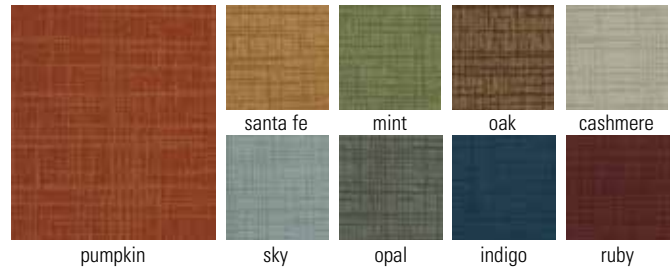
\$\$\$\$\$

Ophidian



\$\$\$\$\$

Crosshatch



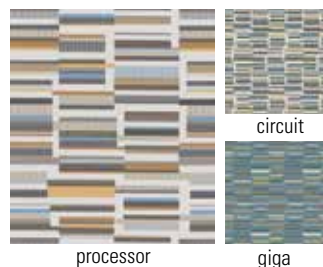
\$\$\$\$\$

Spandau



\$\$\$\$\$

Bandwidth



\$\$\$\$\$

Ripple 2.0



\$\$\$\$\$

Patterns are reduced to show the best view of each fabric. We have done our best to represent color accurately, but printing processes and lot selections vary. Please contact us for specific fabric samples for optimum pattern and color matching.

Lara \$\$\$\$\$

haze vicuna wizard
tranquil red earth

Arbor \$\$\$\$\$

stone oat meadow
juniper spice

Pebble Trail \$\$\$\$\$

calm tranquil celadon
aquifer

Pixel \$\$\$\$\$

adriatic alabaster dijon graphite grotto jam mandarin meadow peri
pesto saffron salsa sapphire sea green sesame thunder

Vero \$\$\$\$\$

fawn mocha basket peacock
sepia indigo charcoal

James Dean \$\$\$\$\$

sumatra rebel byron
alloy

McQueen \$\$\$\$\$

clay cloud cover silver dollar
pebble stormy

Maxwell Thomas® Milwaukee \$\$\$\$\$

sepia antique

SHOWN: Maxwell Thomas® Cedarburg Power Recliner #8VH38 shown in milwaukee sepia.



Vintage \$\$\$\$\$

port sherry tobacco whisper
pretzel wicker paprika

Evans \$\$\$\$\$

bermuda knight bark almond stone castle
wine saddle navy stingray sandstone

Tour \$\$\$\$\$

chardonnay tunnel lion carnival merlot harbor
voyage cruise foothills forage sea glass

Caslin \$\$\$\$\$ Origin \$\$\$\$\$

sandstone chambray storm bordeaux
caramel marmalade walnut

Hyde \$\$\$\$\$

clay harbor charcoal mortar
saddle stone

Jackpot \$\$\$\$\$ **Clutch** \$\$\$\$\$

admiral almond alpine amethyst blaze clementine cypress dandelion fog forest
fossil lapis lead lunar maui mirror mocha moss ninja
nougat pier reef satchel slate taupe truffle wine
tortoise souffle sterling

Spur \$\$\$\$\$ **Mercury** \$\$\$\$\$

sandstone pecan cocoa stallion granite java bronco
freeport mineral air wine indigo
oyster clover allspice oolong

Trove \$\$\$\$\$ **San Remo** \$\$\$\$\$ **Outback** \$\$\$\$\$

raku grain bourbon patina gilded pinecone cognac luster pomegranate
sand dandelion peach roasted tiramisu mushroom skylight reef denim
clover

Assured \$\$\$\$\$ **Premier** \$\$\$\$\$

caramel espresso garnet sting ray deep water
polar lapis coronation nutmeg fern mirage
oyster flaxen dove cerise cumin surf

Burch

Refresh your community with durable, innovative fabrics

With an extensive selection of fabrics featuring sophisticated designs and details, there's always a fabric option to fit your community's needs. Burch fabrics from Direct Supply feature alluring designs and on-trend options backed by our outrageous customer service and Senior Living expertise. Our experts can help you efficiently navigate our extensive fabric selection to create a sought-after look.



Fabrics shown from top to bottom: bon bon taffy, nordic port, madras aura, jubilee aura, samba ember, cardigan aura, solace monarch, mezzanine boulder, boho canyon

Schedule a FREE design consultation or fabric samples today.

Get started at DirectSupply.com/Impressions



Visit DirectSupply.com/Impressions or call 1-800-893-7222 to schedule a FREE consultation!



Maxwell Thomas® Atwood Lounge Chair #289HD in quick ship caslin reef with walnut finish and vintage nailhead



Holsag England Stacking Armchair #D3R90 in quick ship rush hour fiesta (back) milwaukee antique (seat) corduroy finish.



Maxwell Thomas® Kensington Dining Chair #CXR51 in quick ship mandalay moroccan silver (back) and milwaukee sepia (seat) with corduroy finish.



Crypton Fabrics

- a. beeline crystal
- b. bridgework zest
- c. bridgework nomad
- d. morse code botanical
- e. morse code vanilla bean
- f. kisco fountain
- g. rush hour fiesta
- h. steamboat woodland
- i. steamboat cognac
- j. kasan bracken
- k. dorset cotswald
- l. ensemble maple
- m. rush hour veil
- n. dejo river rock
- o. piatto sea green
- p. tiepolo spice
- q. cayuga flax
- r. victory pecan
- s. accolade opal
- t. nominate sandstone
- u. graham canyon
- v. mandalay moroccan silver
- w. cayuga sandalwood
- x. labrynth calypso
- y. raffia seaglass
- z. prep school flax

Vinyl Fabrics

- 2a. palomino cactus
- 2b. stitch aztec
- 2c. outback root
- 2d. milwaukee antique
- 2e. milwaukee sepia
- 2f. mimic pearl
- 2g. san remo cognac
- 2h. san remo pinecone
- 2i. matrix denim
- 2j. caslin reef
- 2k. clutch tortise
- 2l. ladysmith steel
- 2m. rambler prairie

Finishes for Kellex

- 2n. honey
- 2o. mocha cafelle

Finishes for Maxwell Thomas®

- 2p. walnut
- 2q. mocha

Finishes for Akin

- 2r. deep forest
- 2s. spiced cherry

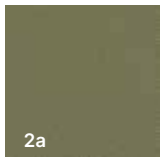
Finishes for Maxwell Thomas Dining

- 2t. ravenwood (faux wood metal chairs only)
- 2u. tawnywood (faux wood metal chairs only)

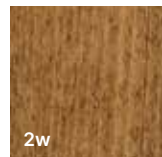
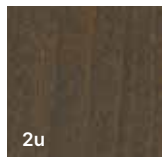
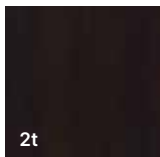
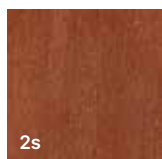
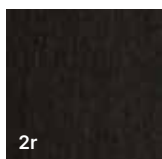
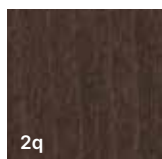
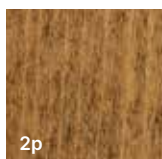
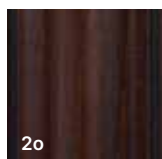
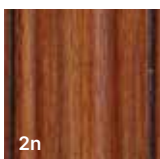
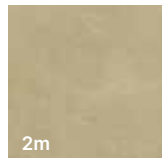
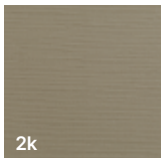
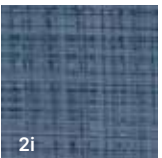
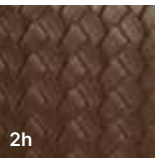
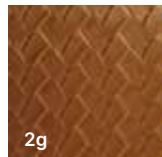
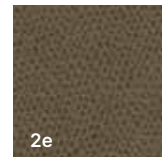
Finishes for Holsag & Maxwell Thomas Dining

- 2v. corduroy (wood chairs only)
- 2w. walnut (wood chairs only)

Quick-Ship Fabrics & Finishes



Choose from our Quick-Ship fabric and finish selections, available for popular common area collections, accent seating and dining chairs. All Direct Supply® Quick-Ship products are ready to ship in 20 days or less, ensuring you get the quality and style you need—fast.



Contact our Senior Living designers for a free consultation. We'll help you select Quick-Ship products, finishes and fabrics for your space.
DirectSupply.com/Impressions



Curated Combinations

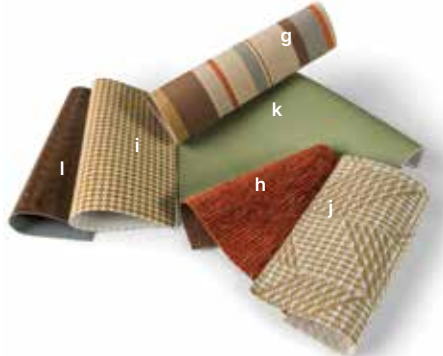
Explore an array of expertly handpicked fabric combinations from the Direct Supply® Interior Design team. Each Quick Ship fabric scheme is thoughtfully designed to allow effortless mixing and matching within the collection, providing endless possibilities for a cohesive, stylish room refresh.

Explore more at
directsupply.com/quickship.



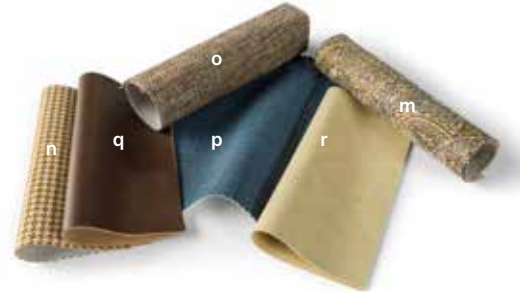
Quick Ship Scheme 1

- a. Burch: Dorset/Cotswald
- b. Kravet: Cayuga/Sandalwood
- c. Burch: Morse Code/Vanilla Bean
- d. Burch: Ensemble/Maple
- e. Maxwell Thomas: Ladysmith/Steel
- f. Burch: San Remo/Cognac



Quick Ship Scheme 2

- g. Kravet: Nominated/Sandstone
- h. Kravet: Graham/Canyon
- i. Kravet: Steamboat/Cognac
- j. Kravet: Cayuga/Sandalwood
- k. Burch: Palomino/Cactus
- l. Burch: San Remo/Pinecone



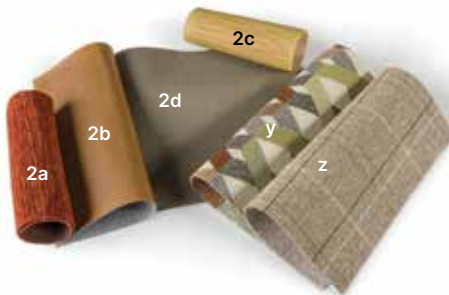
Quick Ship Scheme 3

- m. Kravet: Kasan/Bracken
- n. Kravet: Steamboat/Cognac
- o. Burch: Ensemble/Maple
- p. Burch: Matrix/Denim
- q. Burch: Outback/Root
- r. Kravet: Rambler/Prairie



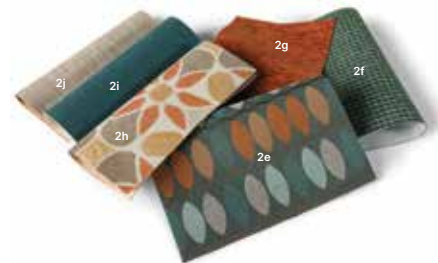
Quick Ship Scheme 4

- s. Kravet: Piatto/Sea Green
- t. Kravet: Dejo/River Rock
- u. Burch: Morse Code/Botanical
- v. Kravet: Accolade/Opal
- w. Kravet: Clutch/Tortoise
- x. Maxwell Thomas: Milwaukee/Sepia



Quick Ship Scheme 5

- y. Kravet: Bridgework/Nomad
- z. Burch: Prep School/Flax
- 2a. Kravet: Graham/Canyon
- 2b. Maxwell Thomas: Milwaukee/Antique
- 2c. Kravet: Stitch/Aztec
- 2d. Maxwell Thomas: Ladysmith/Steel



Quick Ship Scheme 6

- 2e. Burch: Rush Hour/Fiesta
- 2f. Kravet: Steamboat/Woodland
- 2g. Kravet: Graham/Canyon
- 2h. Kravet: Tiepolo/Spice
- 2i. Kravet: Caslin/Reef
- 2j. Burch: Mimic/Pearl

Finishing Touches

Explore our extensive selection of finishes to find the perfect match. Whether you're looking for close matches across different manufacturers or need a custom finish, we've got you covered.

Please note that due to variations in manufacturing processes, the finishes shown below are close representations. To see your options firsthand, call 1-800-634-7328 and request free finish samples today.

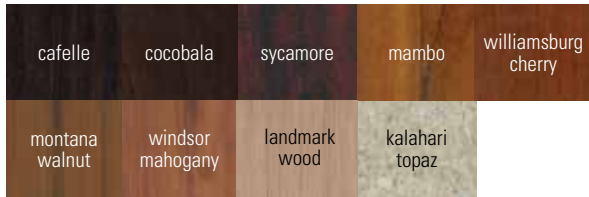
Maxwell Thomas® Upholstered Furniture



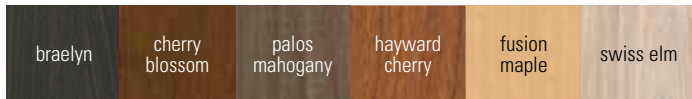
Maxwell Thomas® Laminate Tabletops Tier 1



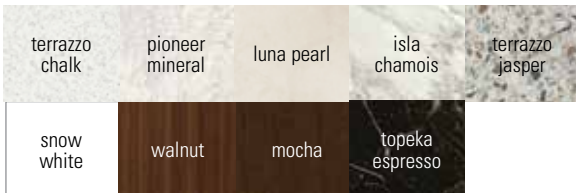
Maxwell Thomas® Laminate Tabletops Tier 2



Maxwell Thomas® Thermolaminate Tabletops Tier 1

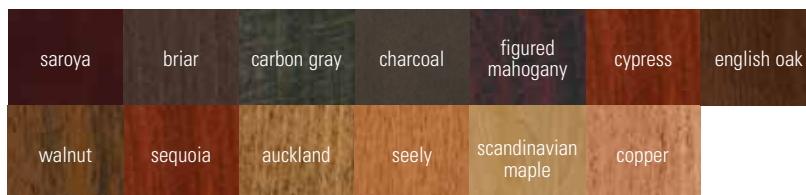


Maxwell Thomas® Thermolaminate Tabletops Tier 2



Maxwell Thomas 4-Leg Dining Tables with thermolaminate tops are not available in mocha finish.

Maxwell Thomas® Occasional Tables†

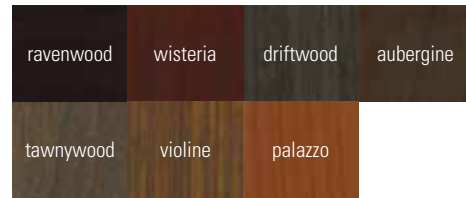


†Finish options vary based on collection. Find specific finish options by collection on pages D66 - D67.

Maxwell Thomas® Wood Dining Chairs



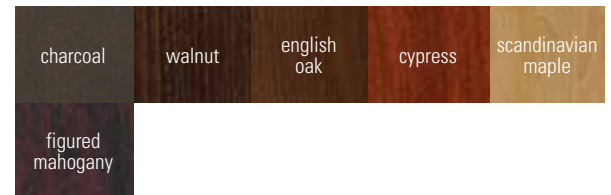
Maxwell Thomas® Metal Dining Chairs



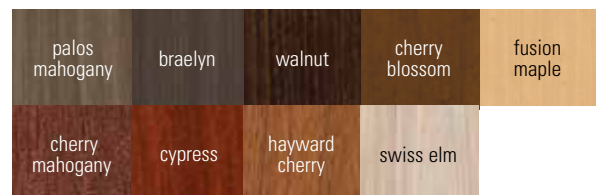
Maxwell Thomas® Maple Tabletops and Bases



Maxwell Thomas® Casegoods† Veneer



Maxwell Thomas® Casegoods† Laminate/Thermolaminate



†Finish options vary based on collection. Find specific finish options by collection on pages D88 - E113.

Akin

deep forest	cordovan	warm walnut	riverwood	harvest brown
planked elm	spiced cherry	millwork cherry	asian walnut	

Akin Laminate Dining Tabletops - Grade 1

madison walnut	nantucket oak	rotary ply
----------------	---------------	------------

Akin Laminate Dining Tabletops - Grade 2

agatha suede	millwork chery	spiced walnut	viola
--------------	----------------	---------------	-------

Akin Laminate Dining Tabletops - Grade 3

beigewood	figured mahogany	kalahari topaz	montana walnut	natural tigris
new age oak	quartered oak	river cherry	neowalnut	

Akin Laminate Dining Tabletops - Grade 4

henna vesta	uptown walnut	veranda teak	warehouse oak
-------------	---------------	--------------	---------------

Akin Laminate Dining Tabletops - Grade 5

bainbrook gray	canyon passage	magnata	silver travertine
----------------	----------------	---------	-------------------

Fairfield

almond buff	black	cerused espresso	charcoal	walnut
espresso	flint	graphite	graystone	hazelnut
manhattan	mica	modern truffle	montego bay	pearl
 sheer dove	tobacco	dark sable	sable	toffee

H Contract

bramble	classic	corsica dark	coveside	dove grey	espresso	farmtable
java	new classiques	palisade dark	plantation	raven	stone	weathered

Hekman

antique vanilla	black satin	bristol	chase	cherry	chocolate	tobacco
classic cherry	dove grey	hampton cherry	manchester	medium oak	nutmeg	toffee
organic	portsmith	raisin	rockdale	sand	toast	walnut
williamsburg						

Holsag

black	barrel	chocolate	mahogany	boardwalk	mocha	oak
corduroy	truffle	heritage walnut	cayenne	natural	cream	chestnut
charcoal	walnut neo	macchiato	pebble gray	walnut	coffee	greige
vintage gray						

Kellex

english chestnut	honey	kensington maple	light oak	mocha caffelle	wild montana walnut
new age oak	solar oak	spice	swiss fonthill pear	walnut	

Schedule a FREE design consultation

Whether you're replacing one piece of furniture or refreshing an entire room, our design consultants can help you coordinate your new and existing furnishings for a look that makes an impression.



Visit [DirectSupply.com/Impressions](https://www.DirectSupply.com/Impressions) or call 1-800-893-7222 to schedule a FREE consultation!